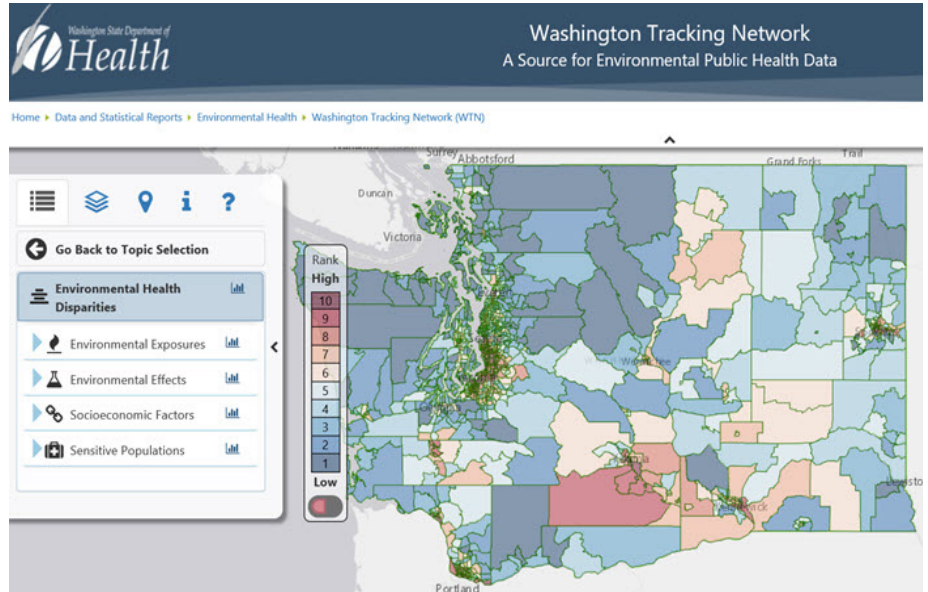


# Washington Environmental Health Disparities Map

The **Washington Environmental Health Disparities Map** is an interactive tool that compares communities across Washington State for environmental health disparities.

The map shows pollution as well as proximity to hazardous waste sites. It also shows poverty and unaffordable housing, among other population characteristics.

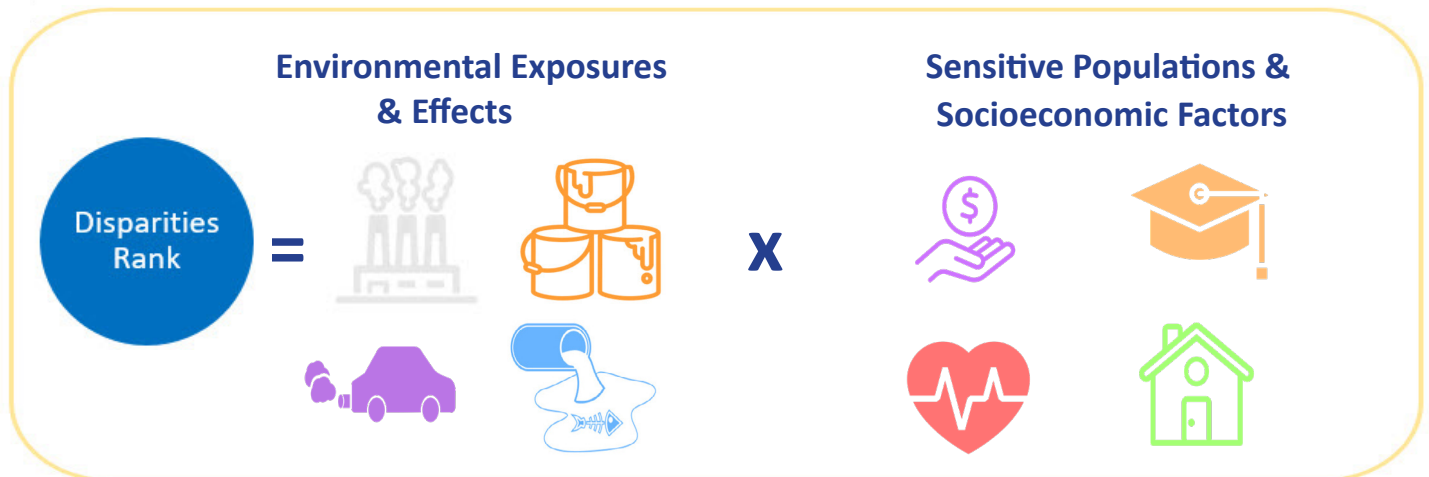
The map is displayed on the Washington Tracking Network's (WTN) Information by Location (IBL) mapping tool.



## Insight Through Visualization

Community leaders, state policymakers and environmental health advocates will be able to compare and visualize how pollution affects the well-being of some of the state's most impacted communities.

The map provides new and rigorous insights into where public investments can be prioritized to buffer environmental health impacts on Washington's communities, so that everyone can benefit from clean air, clean water and a healthy environment.



\*Icons shown do not represent all 19 indicators on the map.

### WTN's Information by Location (IBL) tool

The IBL mapping tool displays relative community rankings by selected health and social factors. Community demographics, including population, age/sex and race data are also presented.

# Collaboration in Action

The map is the result of a collaborative project between:

- University of Washington’s Department of Environmental and Occupational Health Sciences
- Front and Centered - a community-based coalition
- Washington State Department of Health
- Washington State Department of Ecology
- Puget Sound Clean Air Agency

The map was designed using input from community leaders and organizations on the environmental health conditions affecting their communities.

“Your zip code, income, race or language ability shouldn’t determine how healthy you are. I want clean air for my family and neighbors who suffer from asthma. Children should be able to grow up in a safer, less polluted environment.”

- Rosario Maria Medina  
Longtime South Seattle resident,  
Community organizer for Duwamish River Cleanup Coalition

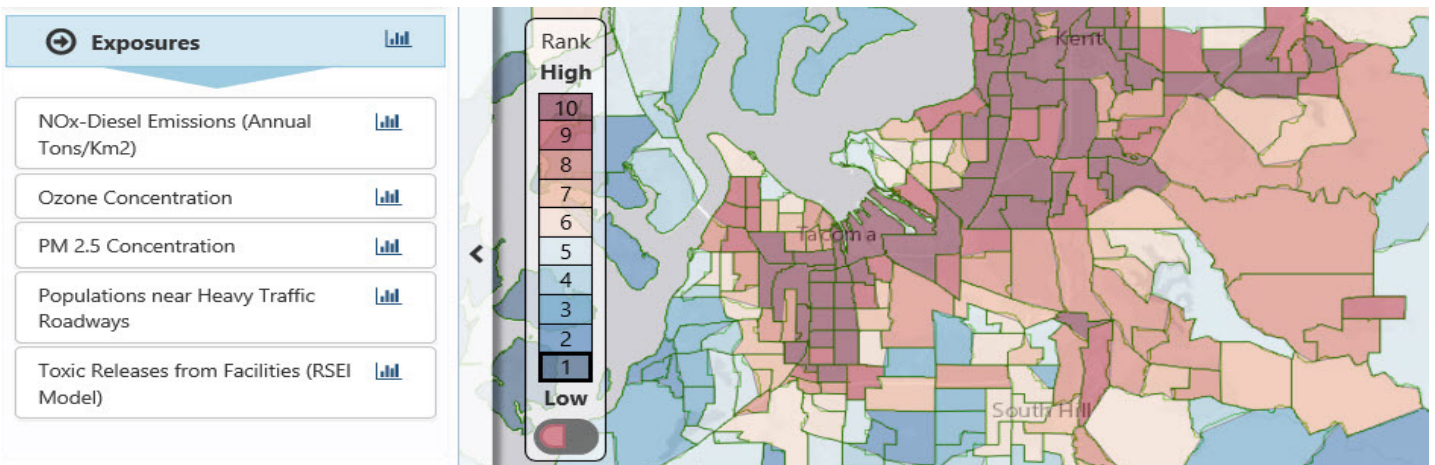
## How to get to the map

The map can be found on the IBL tool at:

<https://fortress.wa.gov/doh/wtn/WTNIBL>. Once at IBL, select *Environmental Health Disparities* on the menu to the left of the screen.

## Census Tracts

The map shows 19 indicators at the census tract level. A census tract is an area designated for taking the U.S. census. Washington state has 1458 census tracts. Some census tracts are smaller in size while others are larger in area depending on how many people live there. Zooming in on the map makes more census tracts appear, as shown in the image below. Census tracts are compared using a 1-10 ranking scale.



Contact us at [doh.wtn@doh.wa.gov](mailto:doh.wtn@doh.wa.gov)

[www.doh.wa.gov/wtn](http://www.doh.wa.gov/wtn)



FRONT AND CENTERED



DOH 334-426 December 2018